

# Transferable Development Credits in the Beaver Hills Initiative Area

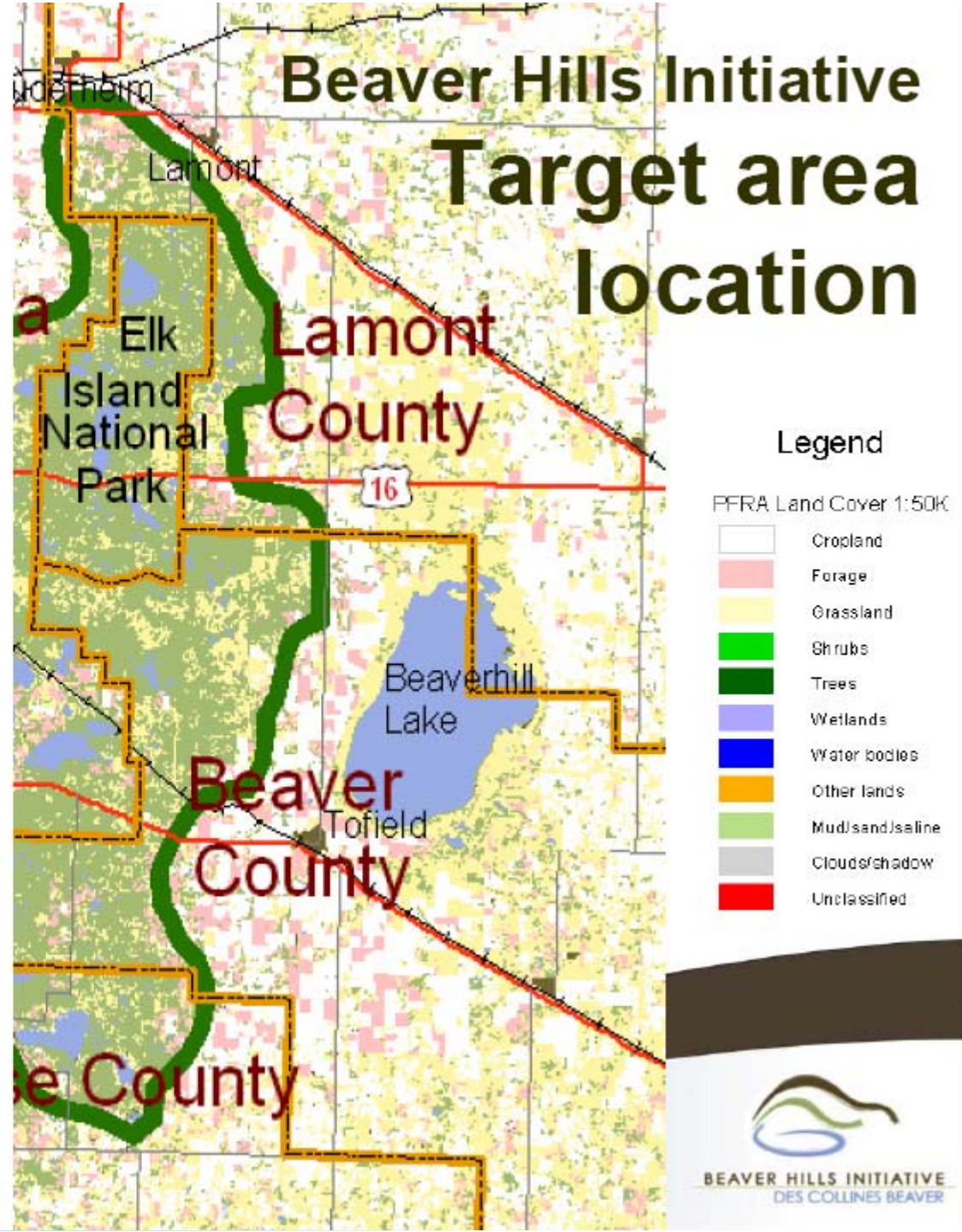
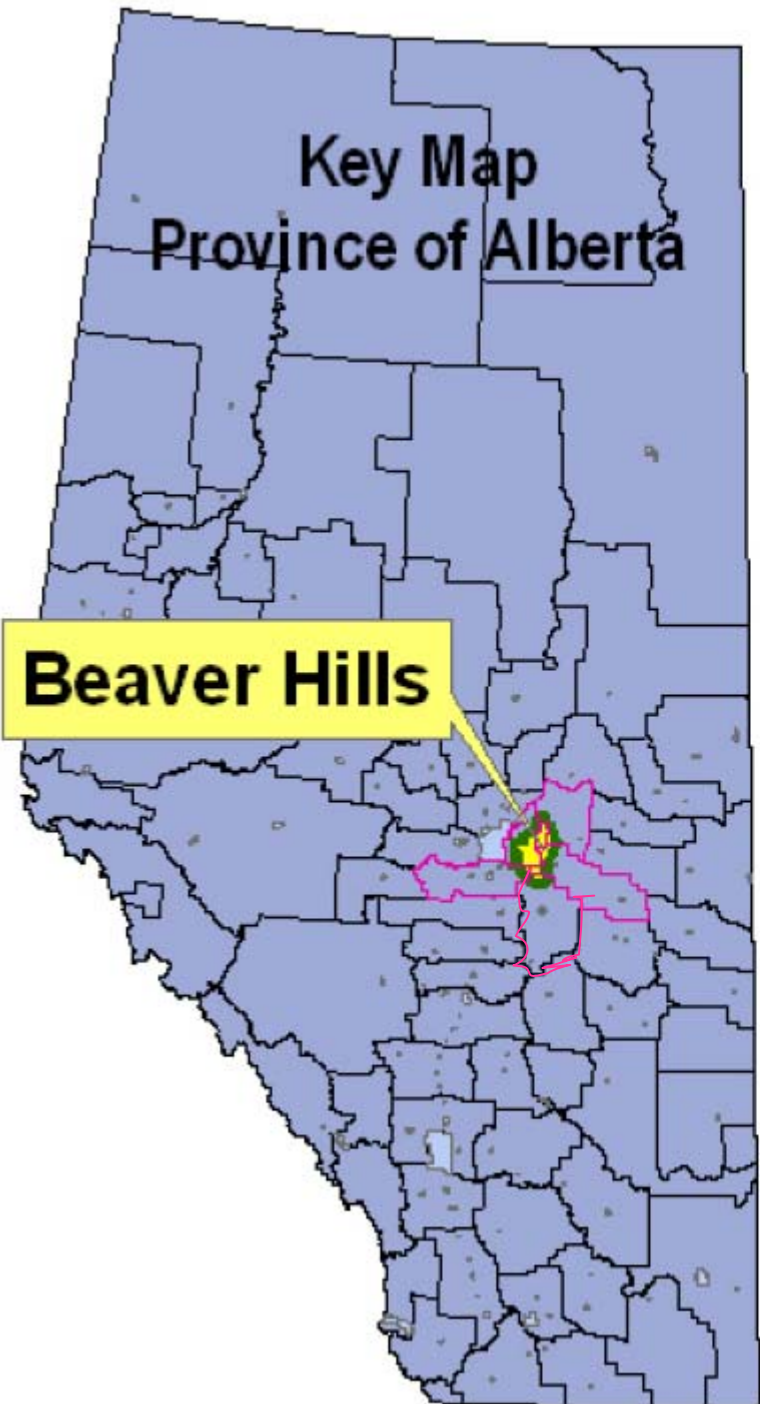




# Project Team

- Beaver Hills Initiative
- Land Stewardship Centre Canada
- Agriculture and Agri-food Canada
- Alberta Innovates Technology Futures
- Miistakis Institute
- Alberta Parks, Tourism and Recreation







# Beaver Hills Initiative

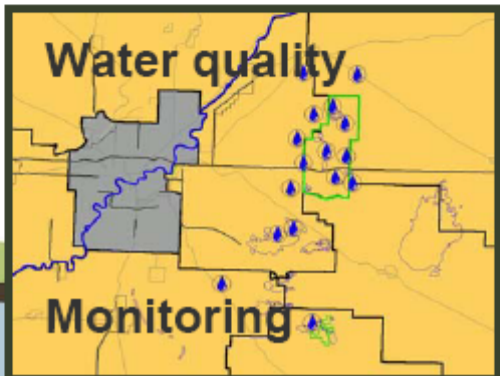
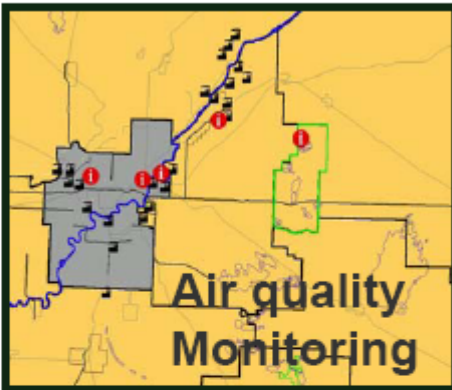
## The Beaver Hills: The bioregion

- Beaver Hills/Cooking Lake Moraine: knob & kettle topography, 1600km<sup>2</sup> in extent;
- A disjunct portion of the Dry Mixedwood Boreal Forest sub-region of Alberta located within the Province's Central Parkland sub-region;
- Higher elevation, cooler, wetter climate;
- Rich in wetlands;
- Extensively treed upland;
- Supports high biological diversity of vegetation, waterfowl, mammals, and birds;
- Designated protected areas account for just over 25% of the area, NCC Masterpiece Landscape;
- Increasingly impacted by one of Canada's fastest growing metropolitan regions.





# Landscape change and environmental quality issues within the Beaver Hills





# Review of BHI's TDC work

- Overall goal
  - To design a TDC program to implement conservation objectives in the BHI area
  - Promote leadership and build capacity for the use of TDCs (and MBIs) in Alberta and Canada.
- 2006
  - ARC TDC Program Feasibility Study
  - BHI Board interested in further developing the TDC concept
- 2008
  - TDCs identified as a conservation tool in Alberta's Land-use Framework
- 2009
  - Legislation to enable TDCs (ALSA)
  - Conservation Stewardship Strategy Development
- 2009
  - TDC pilot project





# Feasibility for the BHI Region

- Clearly stated and publicly acceptable goals and objectives in the BHI Land Management Framework
  - Quality of Life, Biodiversity, Water Quality, Air Quality, Land Use
  - Respect Property Rights
- GIS mapping of goals and objectives into plans which specify how lands contribute to specific goals and objectives
- Restrictions on development for Strathcona County's BHI Special Policy Area
- Strong growth pressures in the region (recession an opportunity)
- Price differentials for different lot sizes and zoning restrictions
- Support of Strathcona County and the BHI for TDCs
- Interjurisdictional opportunity.





# Strathcona County TDC Project Components

- Science to support conservation credit values in BHI
  - Ecosystem Service Based Credits
- Education and awareness
- Consultation on TDC program Options
- Market design (e.g. credit ratios)
- Development of administrative structures
  - E.g. registry





# Science to Support Conservation Credits

- Ecosystem Modeling
  - Can we map outcomes for biodiversity, water quality, etc. to management actions
  - Spatial targeting
  - Model Landscape
    - Test rapid assessment indicators that can be used to easily assign 'credits'



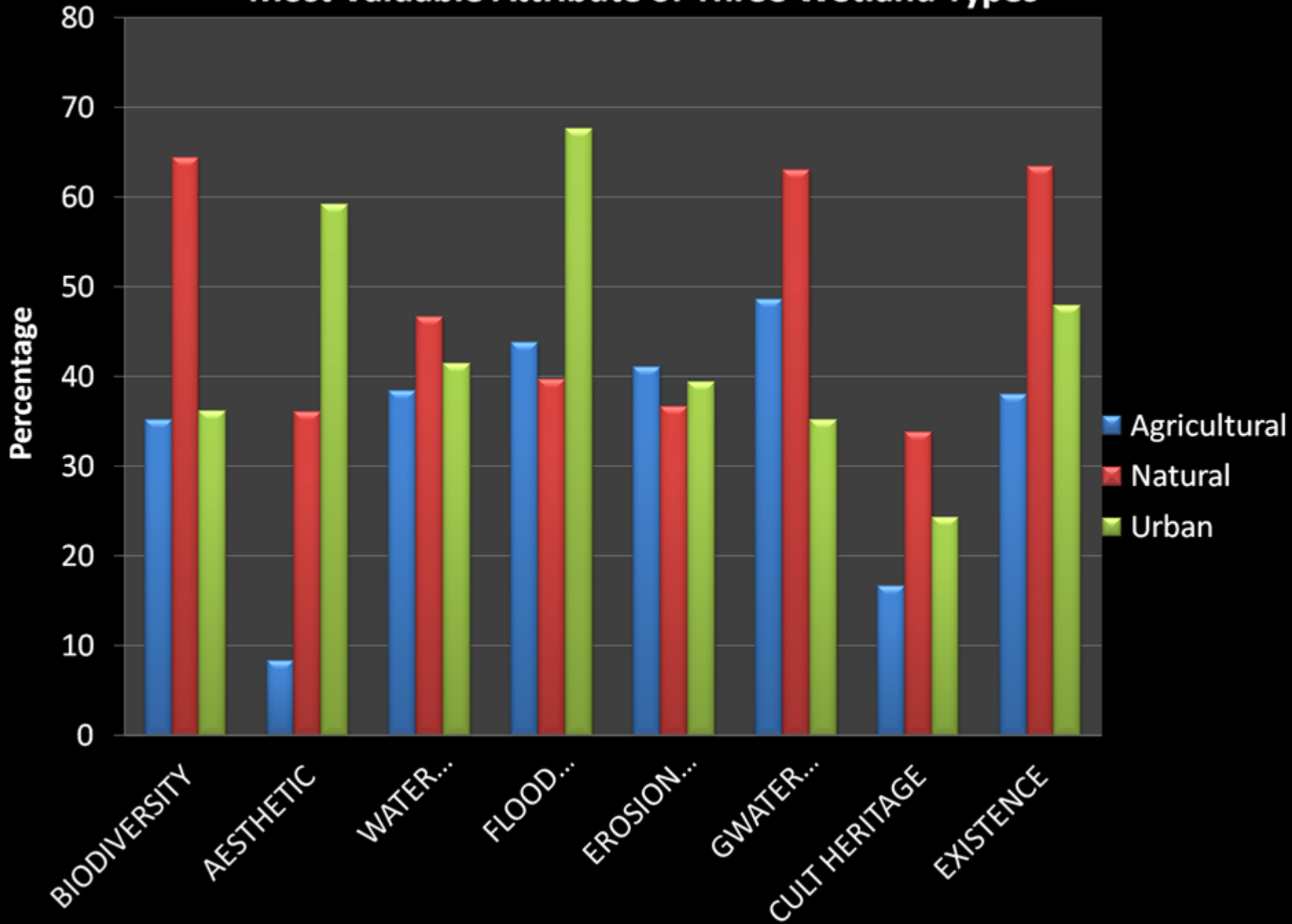


# Stakeholder Consultation about TDC Design

- Two things people hate – density and sprawl
- The consultation process will identify and validate specific design options for the TDC program.
  - Identify barriers, opportunities for developers
  - Identify barriers, opportunities for landowners
  - Identify preferences/tradeoffs between urban development versus rural conservation options



# Most Valuable Attribute of Three Wetland Types





# Workshop Purpose

- Learn from other jurisdictions
  - Program components
  - Address challenges
- Brainstorm
  - Program options
  - Roadmap for project





# Agenda

- Success factors for TDC program and key design issues – learning from experience  
Experiences from the trenches
  - Rick Pruetz (Program Consultant)
- Design challenges and their solutions in other jurisdictions (25 min each)
  - Russel Legg (Larimer County)
  - Ron Stewart (Boulder County)
  - Skip Swenson (Cascade Land Conservancy)

